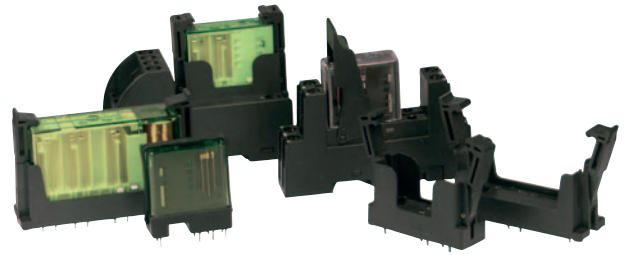
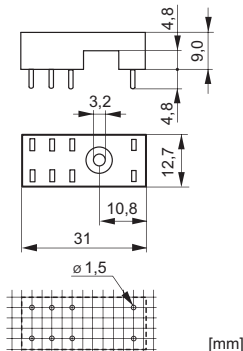


Accessories



PCB socket SRP-SGR2

- PCB socket for SGR282Z, SIR282
- With hold down clip
- Soldering tags for PCB
- 5mm pinning

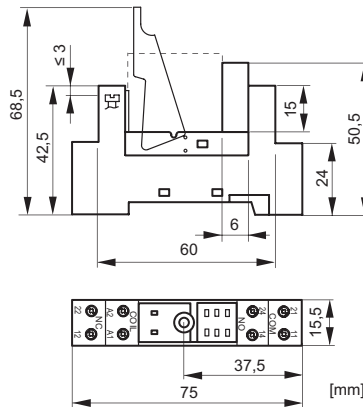
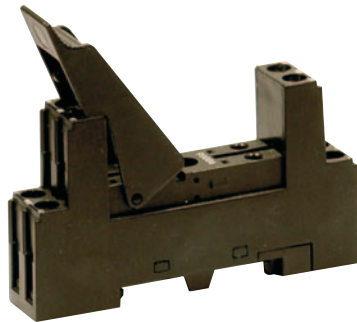


Technical data

| | |
|------------------------------|----------------|
| Rated current | 2x8A |
| Rated voltage | 300VAC |
| Test voltage coil/contacts | 5'000Veff |
| Insulation class (VDE 0110b) | C/250VAC |
| Creeping resistance | CTI 250 |
| Ambient temperature | -40°C to +80°C |
| Packing unit | 100 pcs |
| Approvals | UL, cUL |

DIN rail socket SRD-SGR2

- DIN rail socket for SGR282Z, SIR282
- With plastic grip and marking tag (1 pc)
- Screw terminals
- 5mm pinning
- Assembly on DIN rail 35mm or single-hole mounting with M3 screw



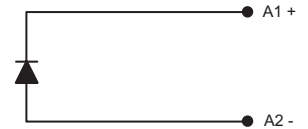
Technical data

| | |
|------------------------------------|----------------------|
| Rated current | 2x8A |
| Rated voltage | 300VAC |
| Test voltage coil/contacts | 4'000Veff |
| Insulation class (VDE 0110b) | C/250VAC |
| Creeping resistance | CTI 250 |
| Ambient temperature | -25°C to +80°C |
| Cross sections for connection with | |
| - wires | 2x2,5mm ² |
| - end sleeves for strands | 2x1,5mm ² |
| Torque max. | 0,8 Nm |
| Packing unit | 20 pcs |
| Approvals | UL, cUL |

Modules for DIN rail sockets

Module SRD-SGR2-M01

- For DIN rail socket SRD-SGR2
- Diode 6VDC to 230VDC (+ on terminal A1)

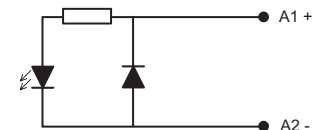


Module SRD-SGR2-M02

- For DIN rail socket SRD-SGR2
- Diode with red Led, 6VDC to 24VDC (+ on terminal A1)

Module SRD-SGR2-M03

- For DIN rail socket SRD-SGR2
- Diode with green Led, 6VDC to 24VDC (+ on terminal A1)

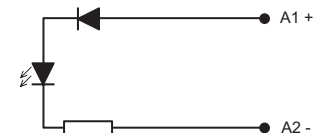


Module SRD-SGR2-M04

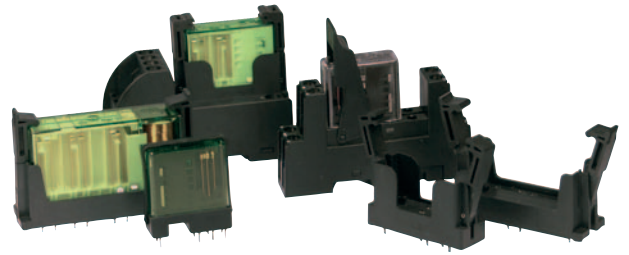
- For DIN rail socket SRD-SGR2
- Red Led, 6VDC to 24VDC (+ on terminal A1)

Module SRD-SGR2-M05

- For DIN rail socket SRD-SGR2
- Green Led, 6VDC to 24VDC (+ on terminal A1)

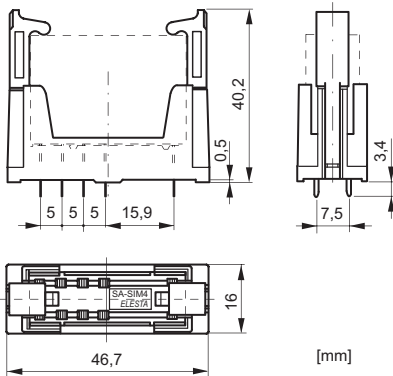


Accessories



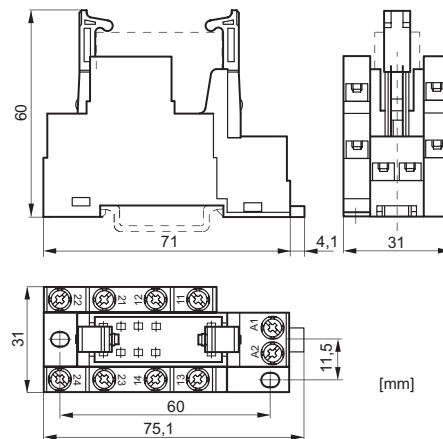
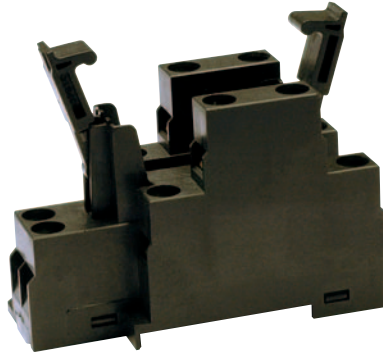
PCB socket SRP-SIM4

- PCB socket for SIM 4 Contacts
- With integrated retaining/ejector handles
- Soldering tags for PCB



DIN rail socket SRD-SIM4

- DIN rail socket for SIM 4 Contacts
- With integrated retaining/ejector handles
- Screw terminals
- Assembly on DIN rail 35mm or with 2xM3 screws



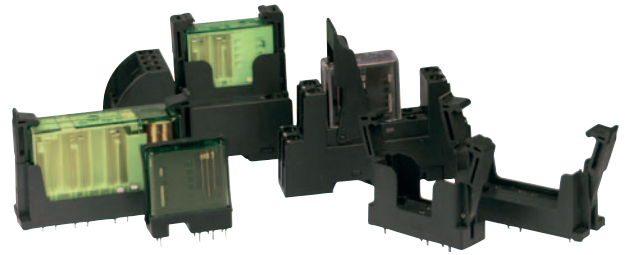
Technical data

| | |
|------------------------------|----------------|
| Rated current | 7A |
| Rated voltage | 250VAC |
| Test voltage coil/contacts | 4'000Veff |
| Insulation class (VDE 0110b) | C/250VAC |
| Creeping resistance | CTI 250 |
| Ambient temperature | -25°C to +70°C |
| Packing unit | 20 pcs |
| Approvals | UL, cUL |

Technical data

| | |
|------------------------------------|----------------------|
| Rated current | 6A |
| Rated voltage | 250VAC |
| Test voltage coil/contacts | 2'500Veff |
| Insulation class (VDE 0110b) | C/250VAC |
| Creeping resistance | CTI 250 |
| Ambient temperature | -25°C to +70°C |
| Cross sections for connection with | |
| - wires | 2x2,5mm ² |
| - end sleeves for strands | 2x1,5mm ² |
| Torque max. | 0,8 Nm |
| Packing unit | 10 pcs |
| Approvals | UL, cUL |

Accessories

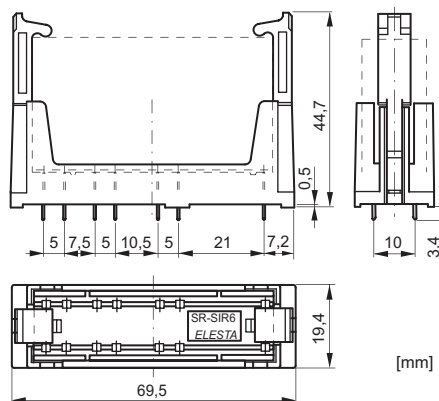
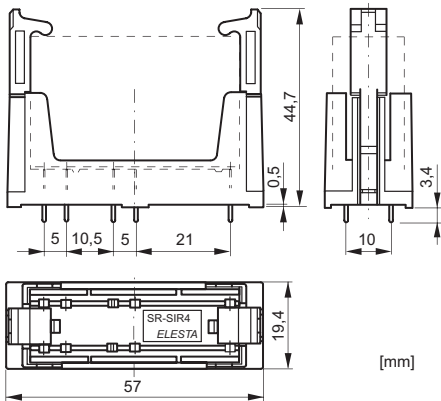
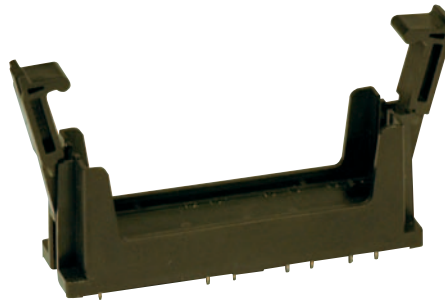


PCB socket SRP-SIR4

- PCB socket for SIR 4 Contacts
- With integrated retaining/ejector handles
- Soldering tags for PCB

PCB socket SRP-SIR6

- PCB socket for SIR 6 Contacts
- With integrated retaining/ejector handles
- Soldering tags for PCB



Technical data

| | |
|------------------------------|----------------|
| Rated current | 7A |
| Rated voltage | 250VAC |
| Test voltage coil/contacts | 4'000Veff |
| Insulation class (VDE 0110b) | C/250VAC |
| Creeping resistance | CTI 250 |
| Ambient temperature | -25°C to +70°C |
| Packing unit | 20 pcs |
| Approvals | UL, cUL |

Technical data

| | |
|------------------------------|----------------|
| Rated current | 7A |
| Rated voltage | 250VAC |
| Test voltage coil/contacts | 4'000Veff |
| Insulation class (VDE 0110b) | C/250VAC |
| Creeping resistance | CTI 250 |
| Ambient temperature | -25°C to +70°C |
| Packing unit | 20 pcs |
| Approvals | UL, cUL |